

Visiotech VS-RDC



- 4G LIVE STREAMING
- FULL HD VIDEO
- 33x OPTICAL ZOOM
- GPS LOCATION MAPPING
- LARGE BATTERY
- MICRO SD RECORDING

Better Protect Your People & Assets

The Visiotech 4G Rapid Deployment Camera is a portable PTZ camera solution that can be utilised in a variety of day/night applications where power and communication infrastructure is not available.

This state-of-the-art Rapid Deployment Camera solution is the latest addition to the Visiotech VS Series product range. The VS Series provides users with the capability of real time video streaming together with GPS location mapping back to a monitoring control centre.

It's all-metal high-definition IP camera is powered by a high-performance lithium battery pack. It is waterproof, shock-proof, small and lightweight and can be setup in minutes utilising its magnetic base or tripod mount.

The Visiotech VS-RDC cameras are ideal for use in the areas of security surveillance, disaster response, incident monitoring, temporary events, traffic monitoring and fire rescue situations to name a few.





FEATURES



REAL TIME SITUATION AWARENESS

Next generation real time situation awareness provides next level protection for staff and assets. Setup in minutes to stream real time video and GPS location back to the Control Centre. Control the Pan, Tilt and Zoom camera in real time. Utilise the powerful 33x Optical zoom lens to view objects from over 100 meters away.



4G RAPID DEPLOYMENT

The integrated 4G transmission module allows the VS-RDC to communicate with the Command Centre in real time over any distance. Its Wi-Fi capability can be utilised for communication instead of 4G when available. Video is stored on the internal 64GB solid-state memory and encased in a robust all-metal IP66 housing that can withstand even the harshest conditions.



FULL HIGH DEFINITION VIDEO

The Visiotech VS-RDC Body Camera comes equipped with a 1920x1080 resolution sensor. That means the Rapid Deployment Camera records video at twice the number of pixels than the standard 720p. As a result, this Rapid Deployment Camera can capture a crystal-clear image of a license plate, faces, features and more from a significantly farther distance than 720p



AUTOMATIC INFRA-RED HIGH OUTPUT NIGHT VISION

The Visiotech VS-RDC Body Camera is equipped with a low-light WDR HD video sensor that records Full HD colour video. Infrared night vision picks up details in complete darkness from up to 50 meters away.

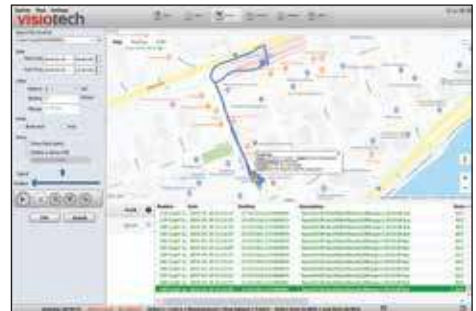
REAL TIME TRACKING AND LIVE VIDEO STREAMING

Visiotech's DEMS Live CMS Software creates real time situation awareness by delivering live tracking of the Visiotech VS-RDC together with the Visiotech VS Series body cameras on the GIS mapping screen.

Live video streaming can be activated from the command centre. Command centre staff are able to effectively coordinate security staff and emergency services by deploying the required help based on staff location and the current operational environment.

Visiotech's DEMS Live CMS Software Features:

- Track and locate Visiotech VS Series Devices on the GIS map in real time
- Stream live video and audio from Visiotech VS Series Devices
- Produce detailed tracking reports of Visiotech VS Series Devices to reveal individual routes, timing in locations and speed
- Monitor and control alarm events from Visiotech VS Series Devices in real time
- Take snapshot pictures and record incidents as they occur
- Produce statistical reports
- Download and playback incident video from Visiotech VS Series Devices
- ONVIF Interface option for third party VMS systems



EASY & QUICK DEPLOYMENT

Simply press the power button and the Visiotech VS-RDC will automatically connect to the control centre as a fully functional Pan, Tilt and Zoom camera.

The Visiotech VS-RDC is a small, lightweight self-contained unit that can be deployed in any location with a 4G or Wi-Fi signal. It is easily transported in its high-quality carry case for quick and easy deployment.

The camera's anti-vibration technology and magnetic base allows the camera to be vehicle mounted for Mobile Command Centre capability. Alternatively, the camera's magnetic base allows quick mounting to any metal structure or its tripod can be utilised for quick deployment.

OPTIONS:

- Tripod Mount
- Solar Options for 24-hour Use
- Magnetic Base
- Vehicle Mounting Options



SPECIFICATIONS

Camera	
Image Sensor Effective Pixels Focal Length Optical Zoom Working Distance	1/2.8" Progressive Scan CMOS, 2MP; 1920(H) x 1080(V), 2 Megapixels; 1080P Focal Length 5.5mm~180mm Optical Zoom 33x, 16x digital zoom 100-1500mm (Wide-Tele)
PTZ	
Pan Range Tilt Range Number of Presets Patrol Pattern	360° endless -25°~90° 255 6 patrols, up to 18 presets per patrol 4 patterns, with the total recording time not less than 10 mins
Infrared	
IR Distance IR Intensity	Up to 50m Automatically adjusted, depending on the zoom ratio
Network and Connection	
WIFI 4G Bluetooth Positioning Interface Protocol	IEEE802.11b,n,g,ac 2.4 Ghz, AP, station LTE-FDD: B1/B3/B5/B8/(B28) 4.0 (optional) Satellite GPS Via Visiotech's integrated GIS mapping software (DEMS Live) Visiotech DEMS Live CMS, ONVIF from Visiotech ONVIF video server
Video	
Compression Streaming BLC Watermark	H.265 / H.264 / M-JPEG Live Video via Visiotech DEMS Live CMS software BLC / HLC / WDR (120dB) Camera ID, Date/Time Stamp
Server Connection	
Live & Playback	Via Visiotech DEMS Live CMS server and client software
Storage	
Storage Capacity	64GB (128GB optional)
General	
Battery Power Working Temperature Humidity Weight Protection	Built-in lithium battery for up to 9 hours usage DC 12~24V, 45W (Max) -40°C~60°C 90% or less 4 KG Ip66, TVS 4000V Lightning protection, surge protection